



Peterswood, Harlow, CM18 7RL

PRICED TO SELL this extremely well presented. Large Three-bedroom family home located in a cul-de-sac just a stone's throw from several good schools, excellent local shops, facilities and two regular bus routes to the town centre and Parndon Wood Nature Reserve. The property offers generous accommodation that includes a large lounge with windows and doors overlooking the landscaped garden, good size fitted kitchen with table space and ground floor cloakroom. On the first floor there are three double bedrooms and family bathroom. This super home has a garage, off road parking and a good size un-overlooked garden.

Price £320,000

Peterswood, Harlow, CM18 7RL

 3

 1

 1

 C

- Family Home
 - Landscaped Garden
 - Gas Heating
- Three Bedrooms
 - Close To School
 - Popular Location
- Garage & Driveway
 - Double Glazing

Entrance Hall

Spacious Hallway

Lounge

14'6 x 17'10 (4.42m x 5.44m)

Kitchen

10'5 x 7'10 (3.18m x 2.39m)

Master Bedroom

11'7 x 11'2 (3.53m x 3.40m)

Bedroom Two

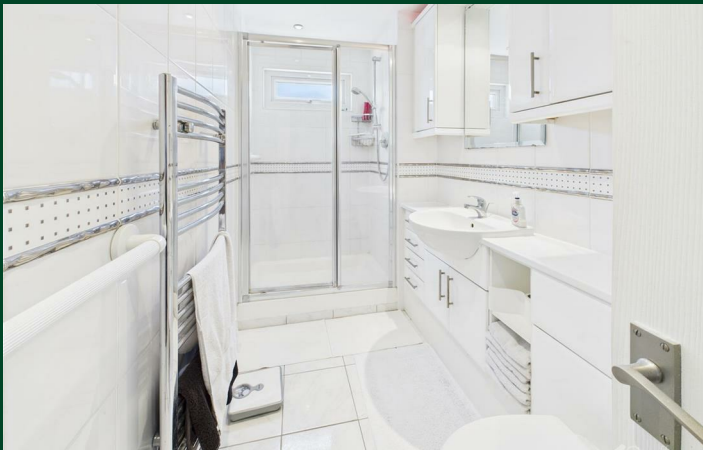
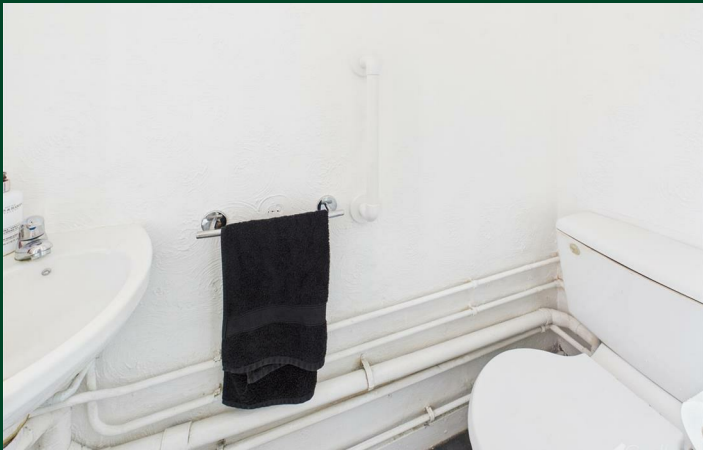
11'9 x 8'3 (3.58m x 2.51m)

Bedroom Three

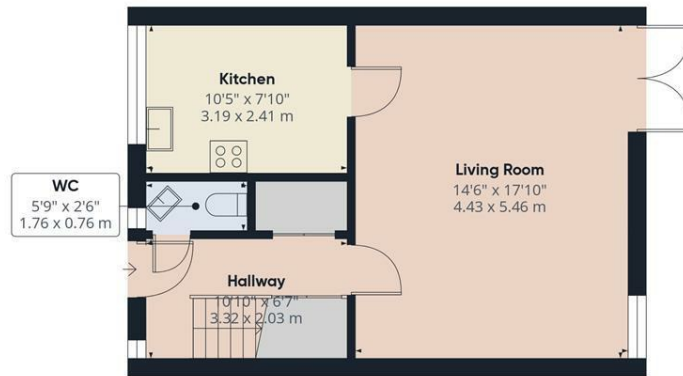
11'1 x 5'7 (3.38m x 1.70m)



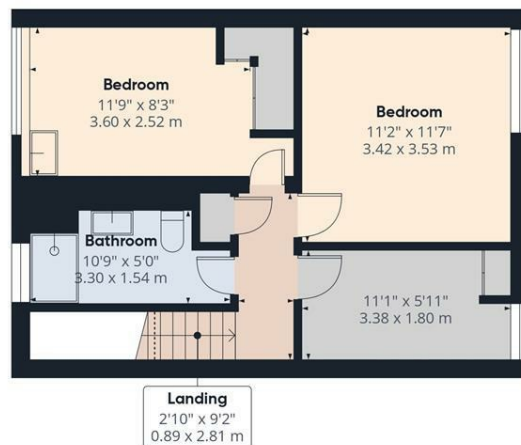
Directions



Floor Plan



Floor 0



Floor 1

Approximate total area⁽ⁿ⁾

835 ft²

77.7 m²

(1) Excluding balconies and terraces

Reduced headroom
----- Below 5 ft/1.5 m

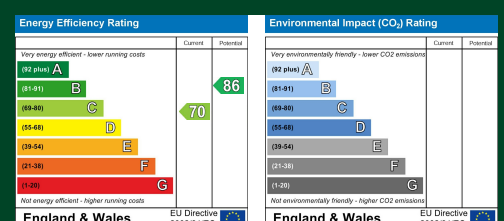
Calculations reference the RICS IPMS 3C standard. Measurements are approximate and not to scale. This floor plan is intended for illustration only.

GIRAFFE360

Council Tax Details

Harlow Band C

These particulars, whilst believed to be accurate are set out as a general outline only for guidance and do not constitute any part of an offer or contract. Intending purchasers should not rely on them as statements of representation of fact, but must satisfy themselves by inspection or otherwise as to their accuracy. No person in this firms employment has the authority to make or give any representation or warranty in respect of the property.



Old Harlow: 01279 444988 Email: harlow@geoffreymatthew.co.uk
Great Ashby: 01438 740111 Email: greatashby@geoffreymatthew.co.uk